

# LET'S EXPLORE

by train + Bluestar bus +  
Hythe Ferry using the

## Waterside Wanderer

multi-mode Day Ranger ticket



ONE  
TICKET  
... So many  
choices!



Hythe



Calshot

## HYTHE



On the waterfront and near the New Forest, Hythe has lots of fabulous independent shops to browse in, and a good choice of friendly pubs, cafés and restaurants.

There are glimpses of its maritime past to discover at every turn. Enjoy the sea air and views from the promenade next to the iconic red and white 'Daymark' - a mariners navigation beacon - then wander around and find many more of Hythe's fascinating historical connections.

Research Hythe online at [lovehytheandwaterside.co.uk](http://lovehytheandwaterside.co.uk) or [visithythehants.co.uk](http://visithythehants.co.uk) or [visitsoutheastengland.com/places-to-visit/hythe](http://visitsoutheastengland.com/places-to-visit/hythe).



Hythe Promenade



Hythe Marina

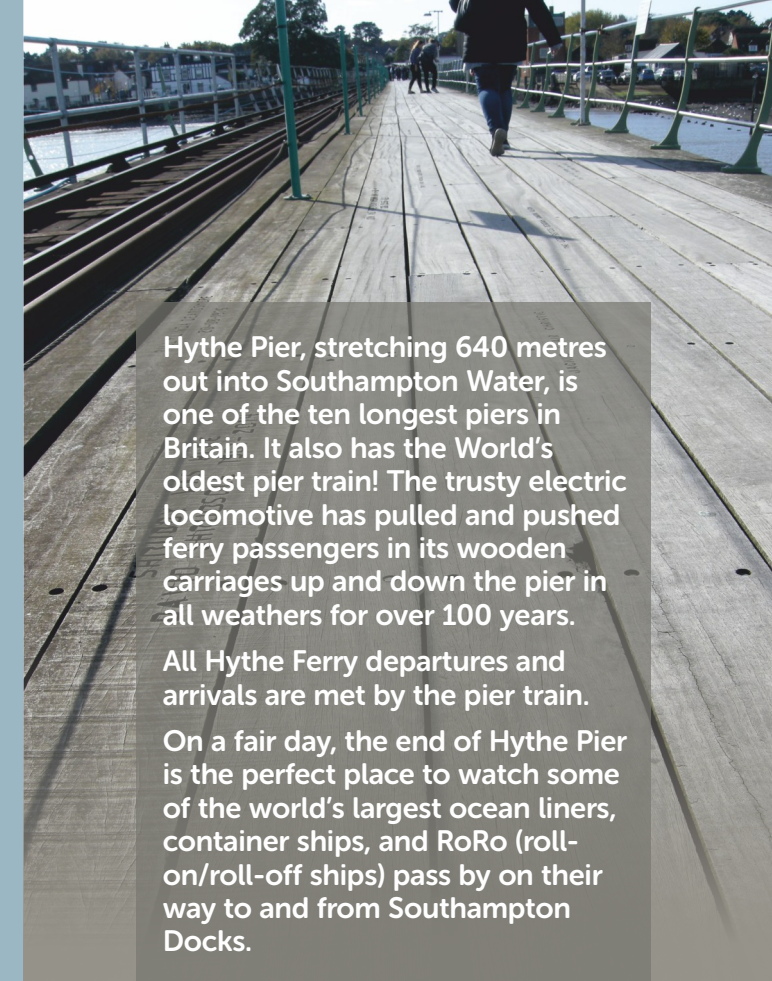
Queen Mary 2



Hythe Pier & Ferry Terminal



Take in great views of Southampton Docks and see cruise ships up close from Hythe Ferry.



Hythe Pier, stretching 640 metres out into Southampton Water, is one of the ten longest piers in Britain. It also has the World's oldest pier train! The trusty electric locomotive has pulled and pushed ferry passengers in its wooden carriages up and down the pier in all weathers for over 100 years.

All Hythe Ferry departures and arrivals are met by the pier train. On a fair day, the end of Hythe Pier is the perfect place to watch some of the world's largest ocean liners, container ships, and RoRo (roll-on/roll-off ships) pass by on their way to and from Southampton Docks.



Hythe Pier Railway

South Western Railway **Hythe Ferry**

## TRAVEL INFORMATION



Train times, fares and rail information

**National Rail Enquiries**

03457 48 49 50  
[nationalrail.co.uk](http://nationalrail.co.uk)

South Western  
Railway  
0345 6000 650  
[southwesternrailway.com](http://southwesternrailway.com)  
Text 0800 6920 792



**bluestar**

01202 338 421 Mondays to Fridays 0830-1830  
[bluestarbus.co.uk](http://bluestarbus.co.uk)

**quayconnect**

01202 338 421 Mondays to Fridays 0830-1830  
[bluestarbus.co.uk](http://bluestarbus.co.uk)

**unilink**

023 8059 5974 [unilinkbus.co.uk](http://unilinkbus.co.uk)



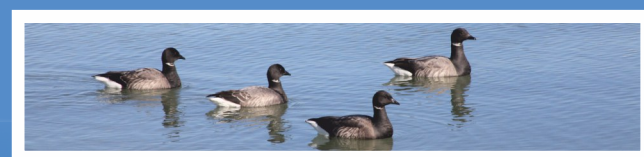
**Hythe Ferry**

02380 840 722 [hytheferry.co.uk](http://hytheferry.co.uk)

## CALSHOT

[hants.gov.uk/things/todo/calshot](http://hants.gov.uk/things/todo/calshot)

From the most southerly bus stop on the Bluestar 8 (BS 9 on Sundays & PH), a level 0.5 mile walk along Calshot Spit gives close-up views of the sea and the beach huts contrasting with the vast former flying boat hangers. The Sunderland Hangar now houses Calshot Activities Centre and café. The historic circular fort of Calshot Castle stands on the water's edge near the RNLI lifeboat station and the lookout tower from which coastguards can see for miles. Nearby Calshot Marsh is a peaceful haven for wetland birds like Brent Geese.



Calshot Castle



[english-heritage.org.uk/visit/placestovisit/calshotcastle](http://english-heritage.org.uk/visit/placestovisit/calshotcastle)

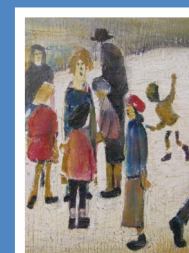
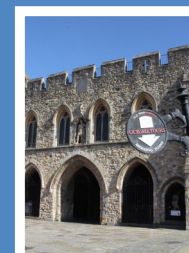
## SOUTHAMPTON

[visitsouthampton.co.uk](http://visitsouthampton.co.uk)

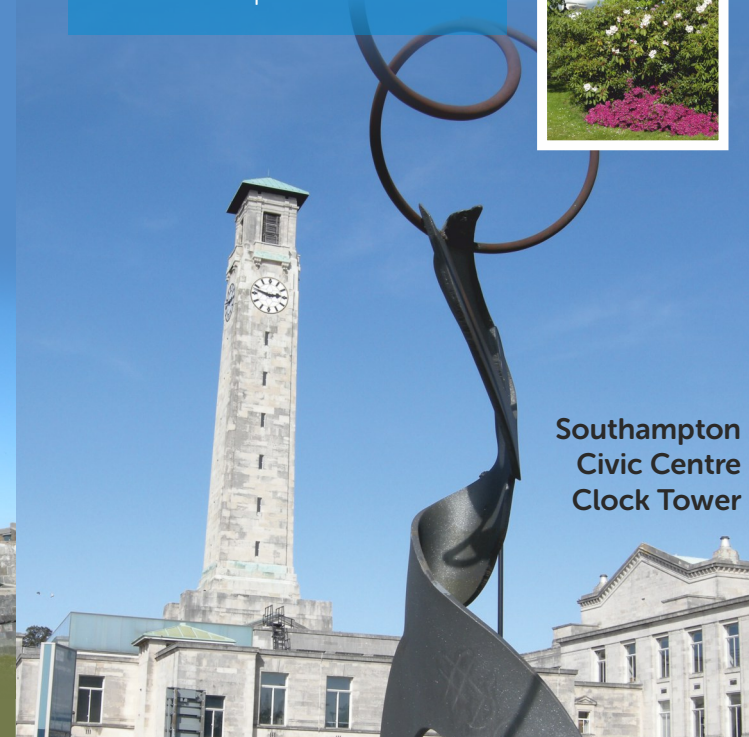
The port city of Southampton, famous for its Bargate, old city walls and medieval buildings, Tudor House and Gardens, Sea City Museum and Solent Sky Museum also has an impressive Art Gallery, and beautiful parks.

The city's thriving retail centre with its High Street, WestQuay complex and IKEA draws visitors from all over the South.

Research Southampton online at [visitsouthampton.co.uk](http://visitsouthampton.co.uk)



Southampton  
Civic Centre  
Clock Tower



## DAY TRIP IDEAS



### Destinations HYTHE and SOUTHAMPTON

Catch the train at Winchester for a ride to Southampton Central station (approx. 20 mins)  
• Exit the station from platform 1 for stop SB to catch Bluestar bus 9 to Hythe (approx. 40 mins)  
• The Hythe Pier Railway train is timed to connect with the ferry. Use the pier train\* (approx. 5 mins.) to catch the Hythe Ferry\*\* to Town Quay (approx. 10 mins) • Make your way up through the High Street towards the Bargate exploring as you go (allow 1-2 hours) then head towards the Civic Centre with its Clock Tower, and then bear left downhill to Southampton Central station.

Alternatively, catch the Quayconnect shuttle bus back to Southampton Central station (approx. 10 mins) for your train trip back to Winchester.

**For more time to explore Hythe - or to explore Southampton - why not make separate trips to make the most of these great destinations?**

### Destination CALSHOT

Exit the station from platform 4 for stop SF.  
• Take Quayconnect shuttle bus to Town Quay and alight at stop QC/Take U1C bus and alight at stop TD (approx. 10 mins) • Take Hythe Ferry\*\* across Southampton Water to Hythe Pier (approx. 10 mins) then ride the connecting Hythe Pier train\* (approx. 5 mins) • Catch Bluestar 8 bus (BS 9 on Sundays & PH) from Hythe to Calshot (approx. 20 mins). Explore Calshot (allow 1-2 hours).  
• Catch Bluestar 8 (BS 9 on Sundays & PH) back through Hythe to Southampton Central station (approx. 1 hr 25 mins), or alight at Hythe Pier to return as you came.

\* Regrettably, the pier train itself is not wheelchair accessible - but users can wheel along the pier.

\*\* Wheelchair access is tide dependent - please contact Hythe Ferry in advance of your trip.

ONE  
TICKET  
... So many  
choices!

## Waterside Wanderer



The journey itineraries shown in this leaflet are suggestions only. Within the Waterside Wanderer Day Ranger ticket zone you can decide where you go and how you get there.

### CHECK YOUR TRAIN, BUS AND FERRY TIMES BEFORE YOU TRAVEL

Journey times may be affected by engineering works, roadworks, traffic conditions, and adverse weather conditions. Connections cannot be guaranteed. Should any journey not operate for any reason the operators will not be held liable for any inconvenience or associated costs.



For other ideas for days out using public transport, download publications from the Three Rivers Community Rail Partnership website.

[www.threeriversrail.com](http://www.threeriversrail.com)





# Waterside Wanderer

Getting to Hythe and the Waterside area by public transport just got easier...

Three Rivers Community Rail Partnership, South Western Railway, Bluestar buses, Unilink buses and Hythe Ferry have joined together to bring you a new, multi-modal ticket for a great day out!



With the Waterside Wanderer you can travel around and explore all day.

Your 'Waterside Wanderer' Day Ranger ticket includes:

- Unlimited** rail travel within the ticket zone after 0900 Mon-Fri, anytime weekends and Public Holidays  
South Western Railway trains:  
**Romsey-Southampton-Chandler's Ford** service (Calling at all stations). Daily every 60 mins.  
**Bursledon-Netley-Southampton** service (Calling at all stations). Daily every 60 mins.  
**Winchester-Southampton** service. Daily, frequent.
- Unlimited** travel on any Bluestar 8 or 9 bus  
Bluestar 8 buses:  
**Southampton Central station-Hythe-Calshot**. Mon-Sat every 60 mins daytime. Sunday 4 journeys to Hythe (See Bluestar 9 for Calshot on Sundays).  
Bluestar 9 buses:  
**Southampton Central station- Hythe- Langley/Fawley**. Mon-Sat every 20 mins daytime, and every 60 mins evenings.  
Sunday every 30 mins daytime to **Hythe**, and every 60 mins evenings. Extends every 60 mins to **Calshot** Suns & Public Hols.
- One return journey on the Quayconnect shuttle bus**  
**Southampton Central station-Town Quay** (for Hythe Ferry) Daily up to every 30 mins daytime.
- One journey on the Unilink U1C (NOCS) bus**  
**Southampton Central station-Town Quay** (for Hythe Ferry) Daily up to every 15 mins daytime.
- One journey on the Unilink U1A (Airport) bus**  
**Town Quay-Southampton Central station** Daily up to every 15 mins daytime.
- One return journey on the Hythe Ferry**  
**Southampton Town Quay-Hythe Pier head** Daily up to every 60 mins. Check sailing times. Crossing time approx. 10 mins.
- One return journey on the Hythe Pier Railway**  
**Hythe Ferry Terminal - Hythe Pier head** Connects with Ferry.

# Waterside Wanderer

Day Ranger ticket zone



# Waterside Wanderer

## TICKET & FARES

- £13.50** Adult
- £11.80** Railcard holder
- £6.75** Child 5-15 years inclusive
- £5.20** with Railcard
- Under 5's travel free with a fare-paying passenger

Purchase your Waterside Wanderer Day Ranger ticket at any staffed Ticket Office at any of the South Western Railway stations shown on the ticket zone map.

When the Ticket Office is closed - the Day Ranger can be purchased from the train guard.

Alternatively, tickets can be purchased in advance online from [southwesternrailway.com](http://southwesternrailway.com) and posted to you. (There is a postage and administration fee).

cheaper than buying separate tickets\*

\* When you use train, bus and ferry

Please note: Waterside Wanderer Day Ranger tickets are NOT available for purchase on the bus or ferry.

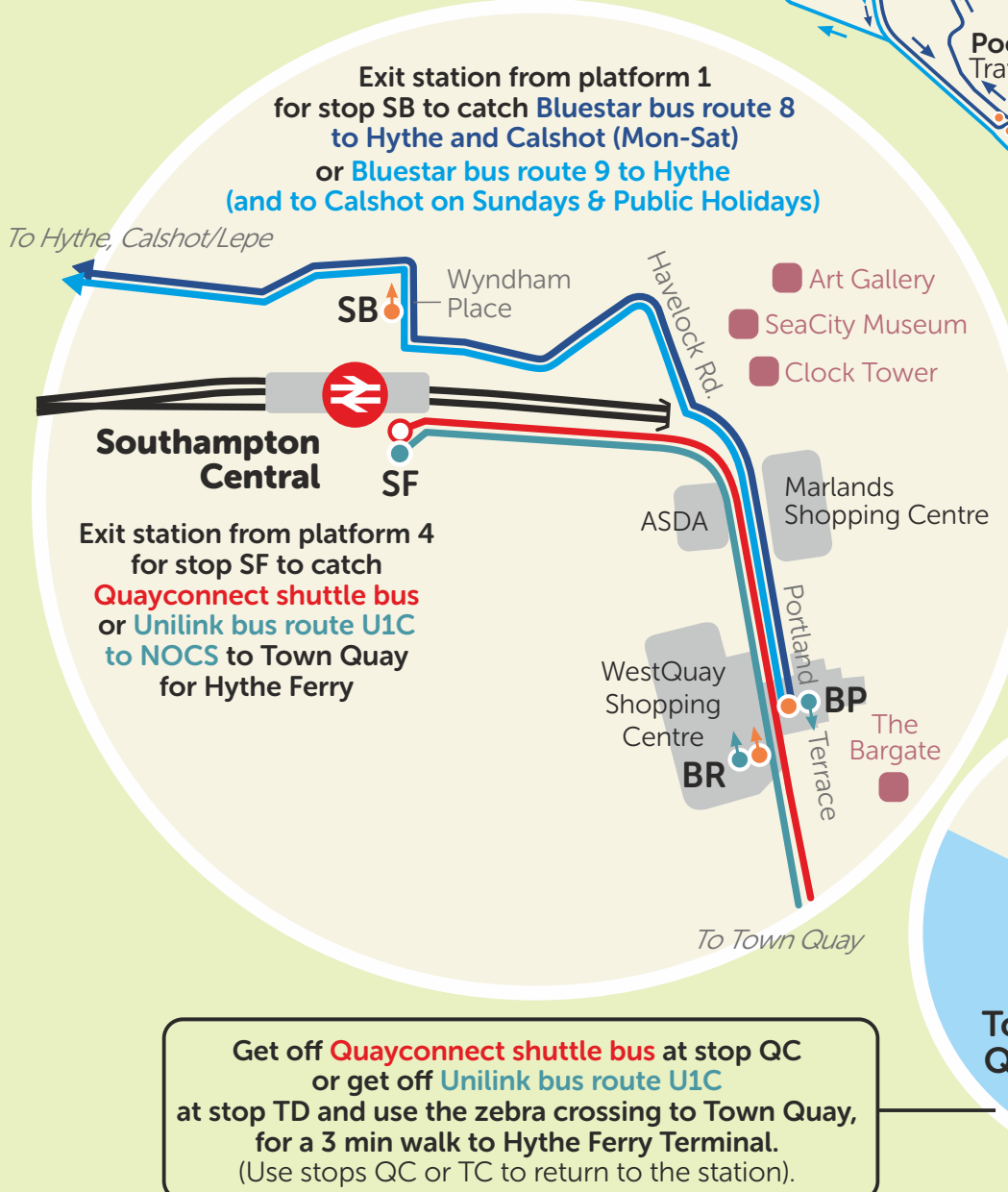


Pick up a map and leaflet from the Hythe Pier Ferry Office to guide you when you visit Hythe.



Hythe High Street

## New Forest National Park



- Railway stations**
- Bluestar bus route 8 and main stops**
- Bluestar bus route 9 and main stops**
- Unilink bus route U1C /A and main stops**
- Hythe Ferry**
- Quayconnect shuttle bus and main stops**